



MONTHLY MEMBERSHIP PROGRESS REPORT

Results as of: 5/31/2016

Multiple District 32

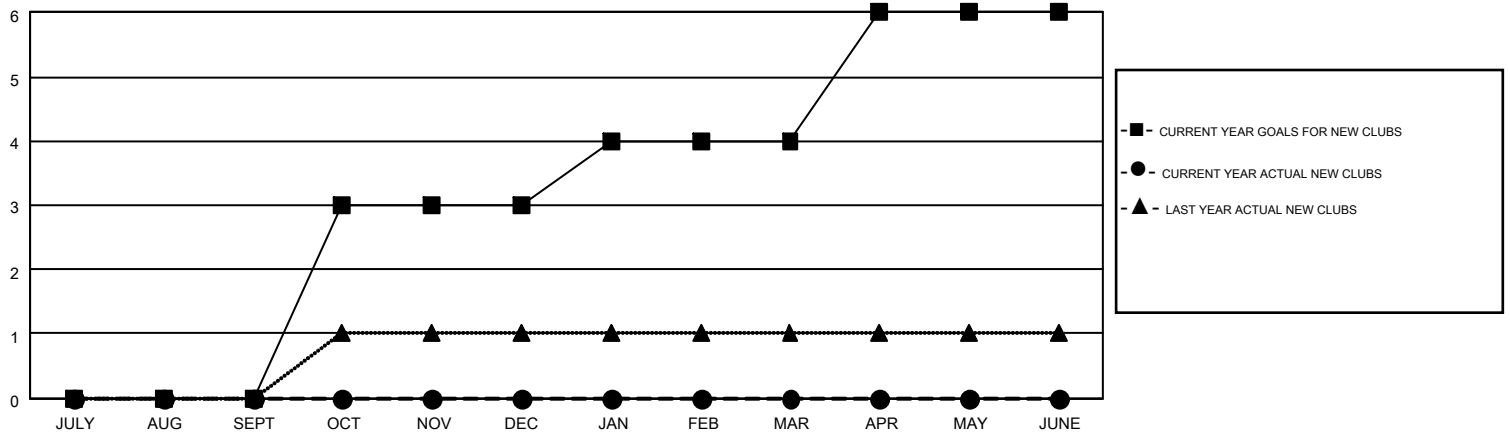
LOCATION: SOUTH CAROLINA

GMT: HARVEY WHITLEY

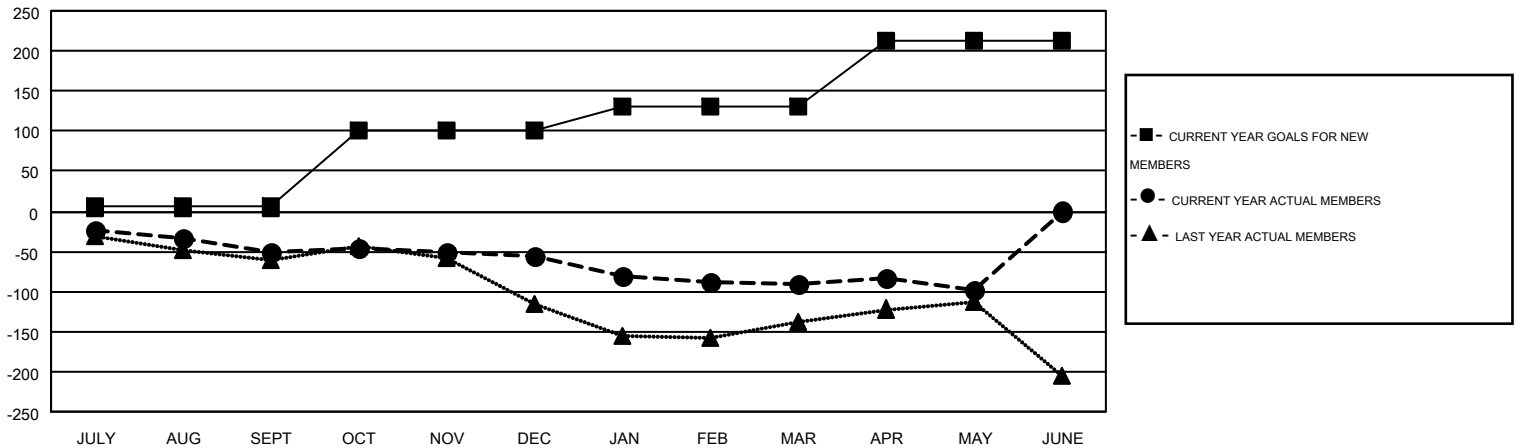
GMT CA 1

Clubs					Members				
RESULTS FOR 2015-2016					RESULTS FOR 2015-2016				
QUARTER	NEW CLUB GOAL	NEW CLUBS	DROPPED CLUBS	NET GAIN/LOSS	QUARTER	NEW MEMBER GOAL	CHARTER AND NEW MEMBERS ADDED	DROPPED MEMBERS	NET GAIN/LOSS
JULY/AUG/SEPT	0	0	0	0	JULY/AUG/SEPT	5	95	147	-52
OCT/NOV/DEC	3	0	1	-1	OCT/NOV/DEC	96	86	90	-4
JAN/FEB/MAR	1	0	2	-2	JAN/FEB/MAR	30	93	127	-34
APR/MAY/JUNE	2	0	1	-1	APR/MAY/JUNE	82	53	61	-8

GOALS AND ACTUAL NEW CLUBS CUMULATIVE



GOALS AND ACTUAL MEMBERS CUMULATIVE



DROPPED CLUBS: 4	88 CLUBS OF 143 ADDED 1 OR MORE NEW MEMBERS	<u>GENDER DISTRIBUTION</u>	
<u>DROPPED MEMBERS</u>		MALE	2,605 (70.87%)
DECEASED	55	FEMALE	1,071 (29.13%)
CLUB CANCELLED	17	CLICK HERE FOR HEALTH ASSESSMENT DATA	
OTHER	350	FAMILY UNIT MEMBERS	729
TOTAL	422	HEAD OF HOUSEHOLD	358
		NON-HEAD OF HOUSEHOLD	371